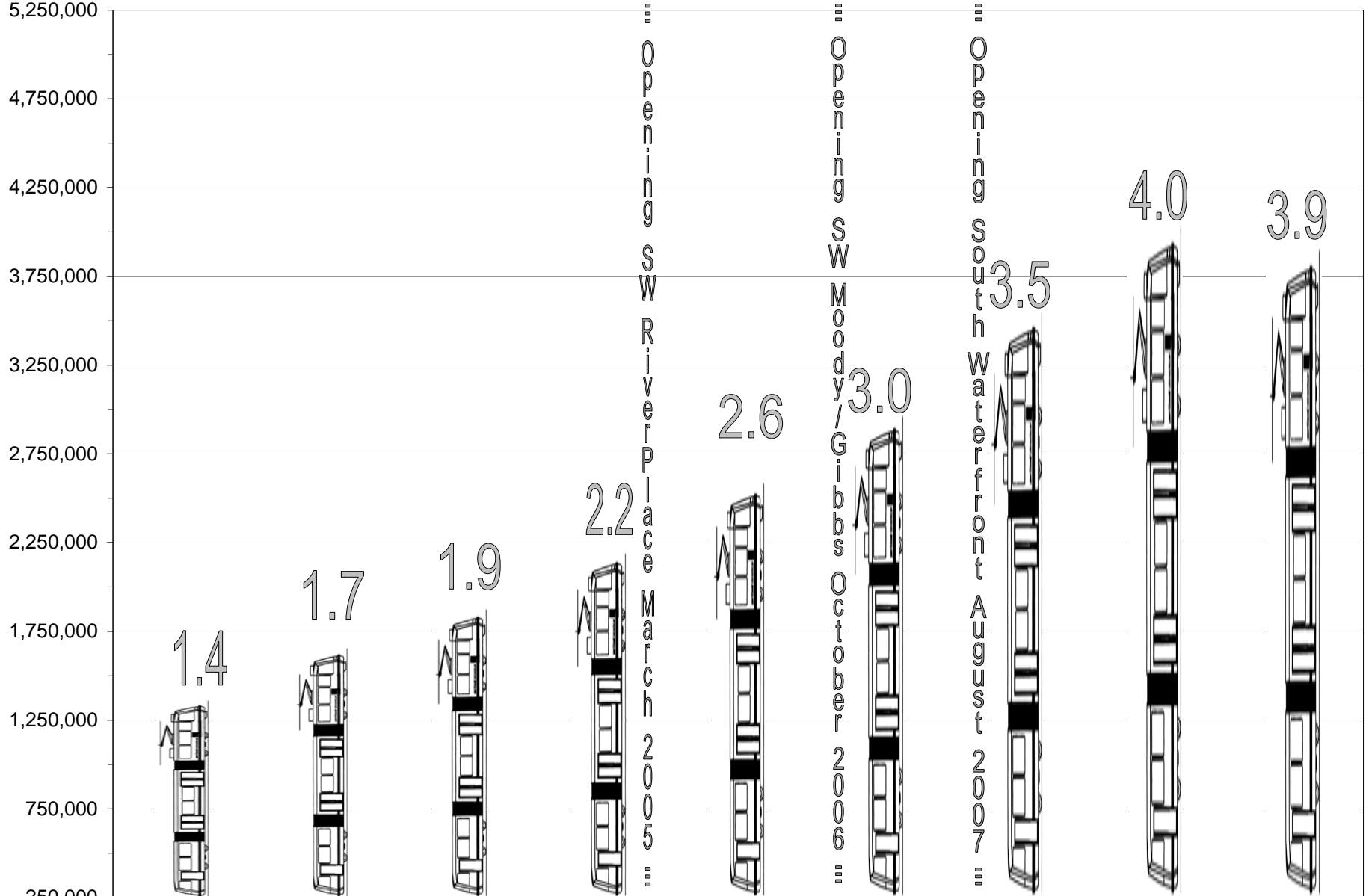


Portland Streetcar Annual Ridership  
Based on Monday - Sunday Service



	FY 01/02	FY 02/03	FY 03/04	FY 04/05	FY 05/06	FY 06/07	FY 07/08	FY 08/09	FY 09/10 (1 mo. Annualized)
Annual Ridership	1,357,878	1,653,648	1,872,133	2,191,097	2,587,033	2,964,576	3,550,316	4,038,308	3,903,418